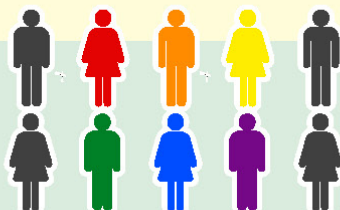




Negative attitudes toward **lesbian, gay, bisexual and transgender (LGBT)** students puts them at an increased risk for violence and bullying. Negative attitudes also impact a student's ability to learn at school. Get the facts on the challenges facing LGBT students here.



61% of LGBT students were more likely than their non-LGBT peers to feel unsafe or uncomfortable as a result of their sexual orientation.

11-30% of gay and lesbian students and **12-25%** of bisexual students missed at least one day of school because of safety concerns.



12-28% of LGBT students were threatened or injured on school property from 2001-2009, according to the Youth Risk Behavior Survey. (Source: <http://www.cdc.gov/lgbthealth/youth.htm>)

Why Support Groups in Schools Matter

Research shows that schools with **LGBT** support groups decrease the likelihood that these students will experience threats of violence, miss school or attempt suicide:



of students in schools with support groups are less likely to hear homophobic remarks in school

VS



who attend schools without support groups

Students in schools with support groups are **2x** more likely to say they have teachers at school who make supportive remarks about lesbian and gay people.

LGBT African American students are less likely to report having a support group in their school than other LGBT students of color.

LGBT students in the South and small or rural towns are least likely to have a support group.

(Source: <http://www.glsen.org/sites/default/files/Gay-Straight%20Alliances.pdf>)



National PTA® Every Child in Focus

Join the **#EveryChild** campaign all year as we focus on the importance of diversity in the classrooms and our school communities. Participate in the conversation, tell us why diversity matters in your school using **#EveryChild** & follow us on social.

